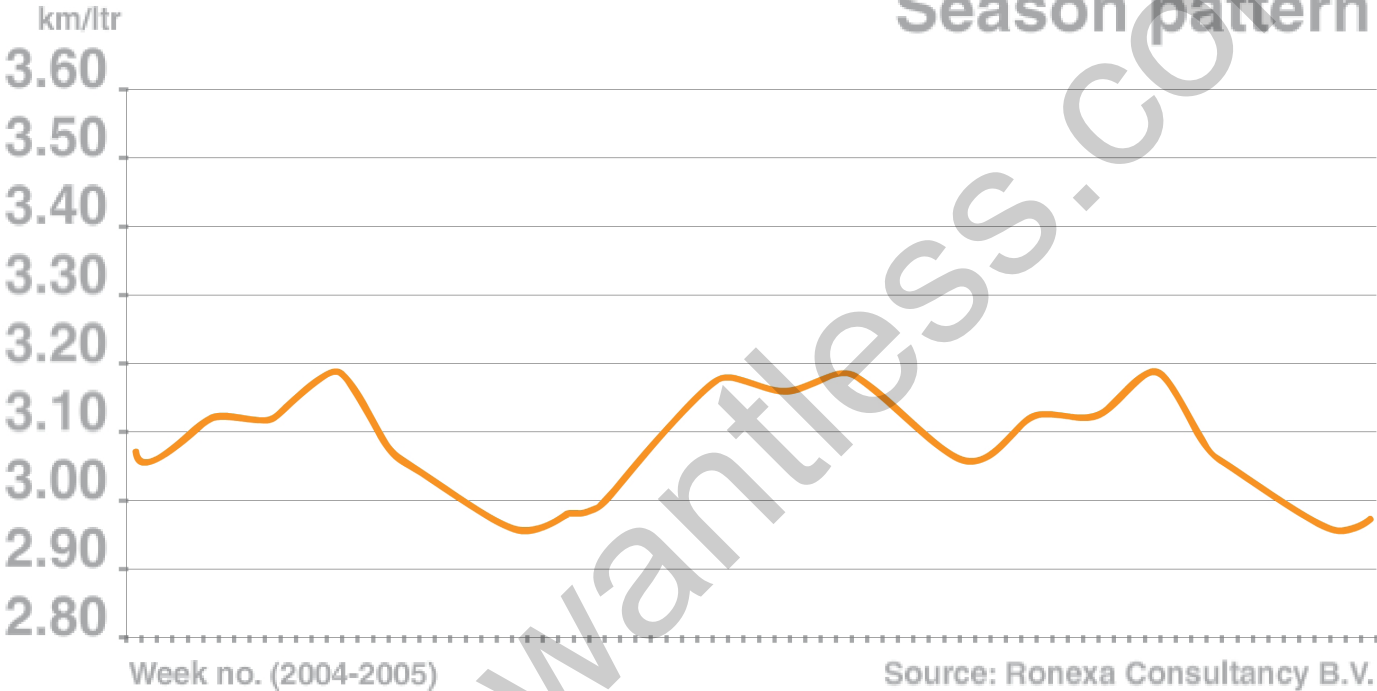


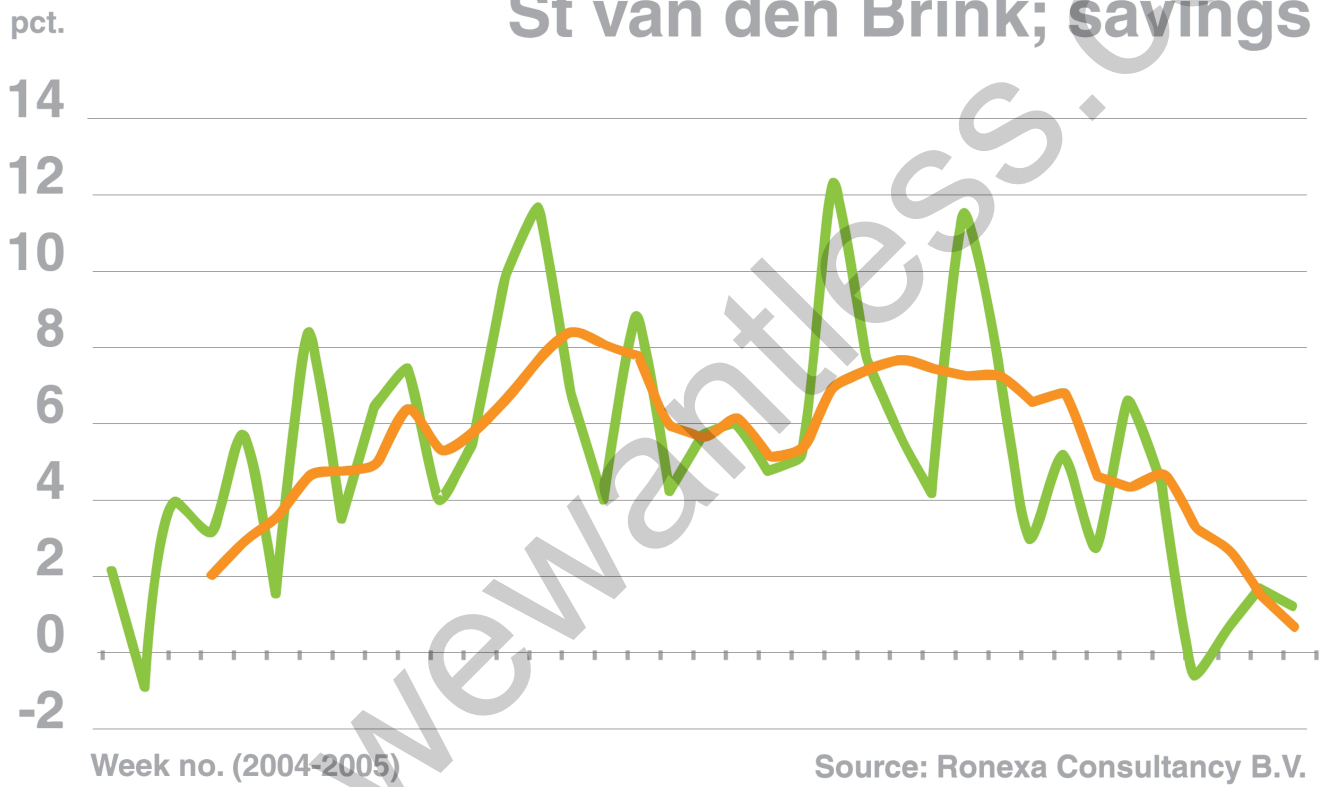
# Season pattern

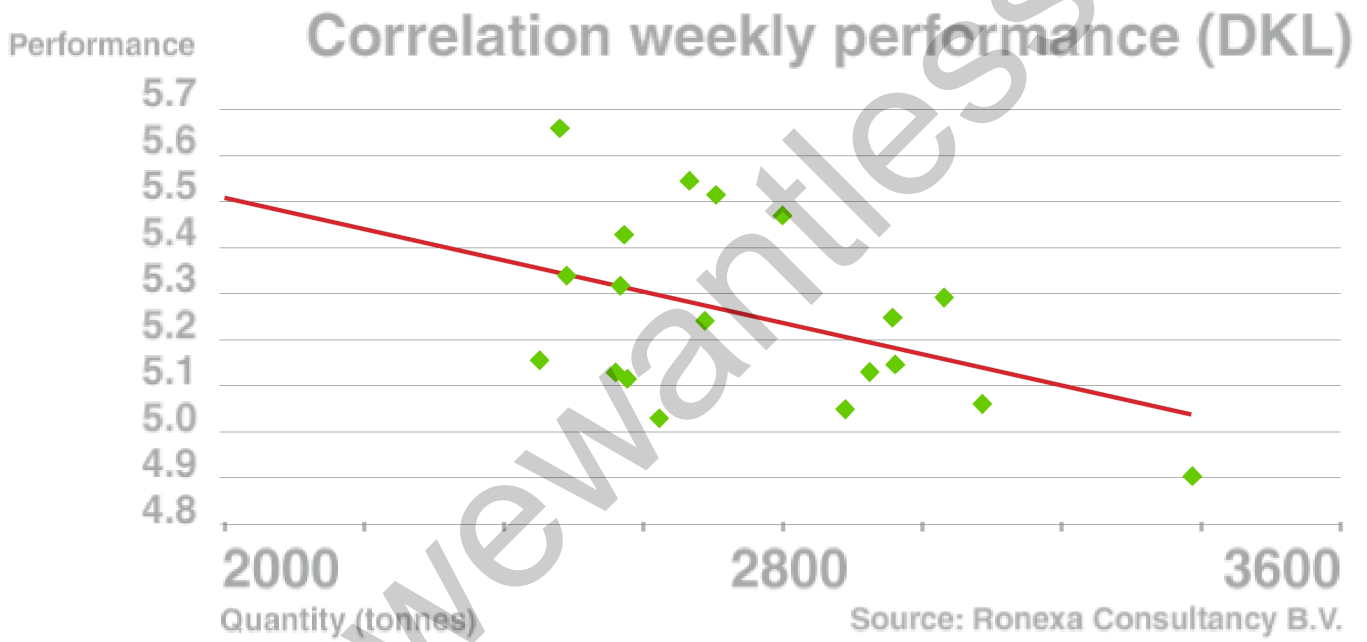


Source: Ronexa Consultancy B.V.

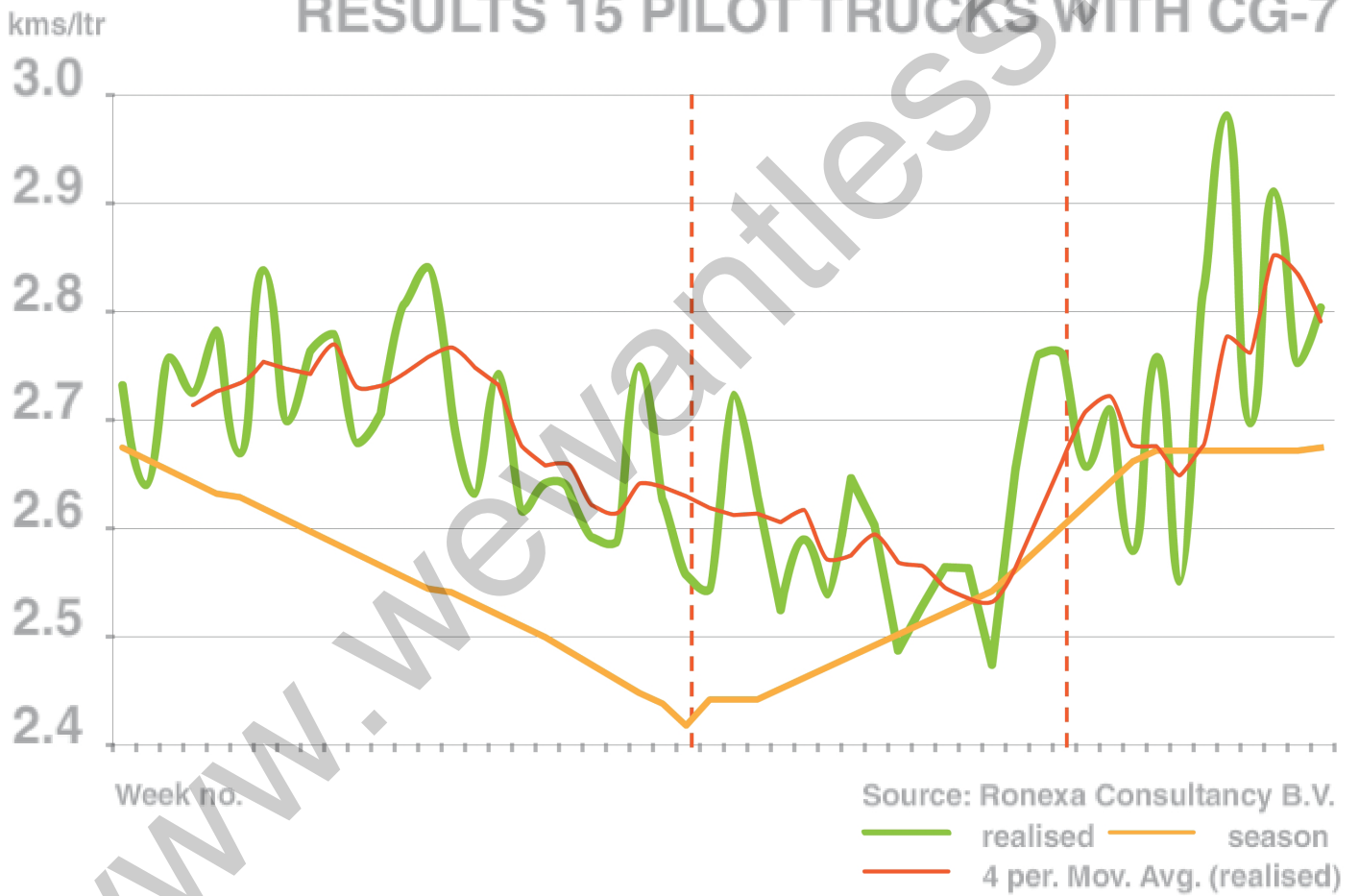
www.wewantless.com

# St van den Brink; savings

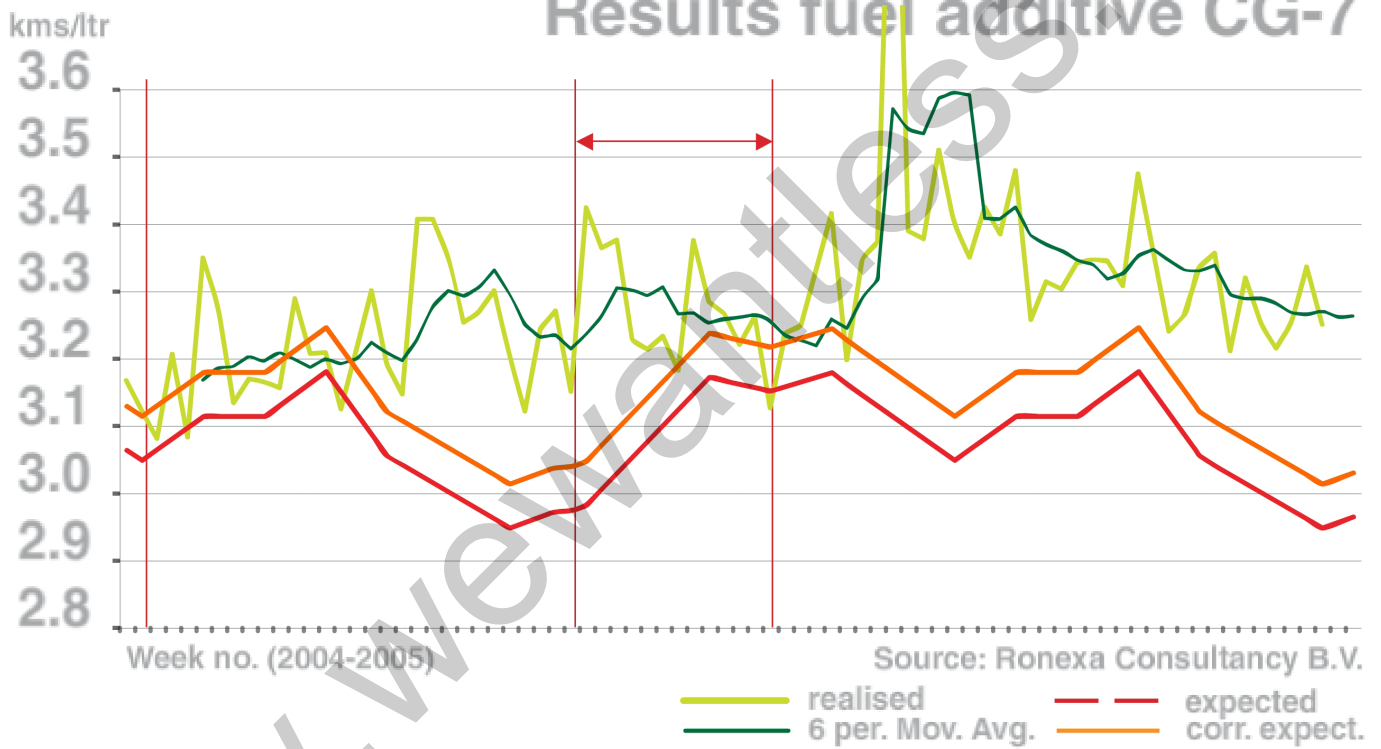




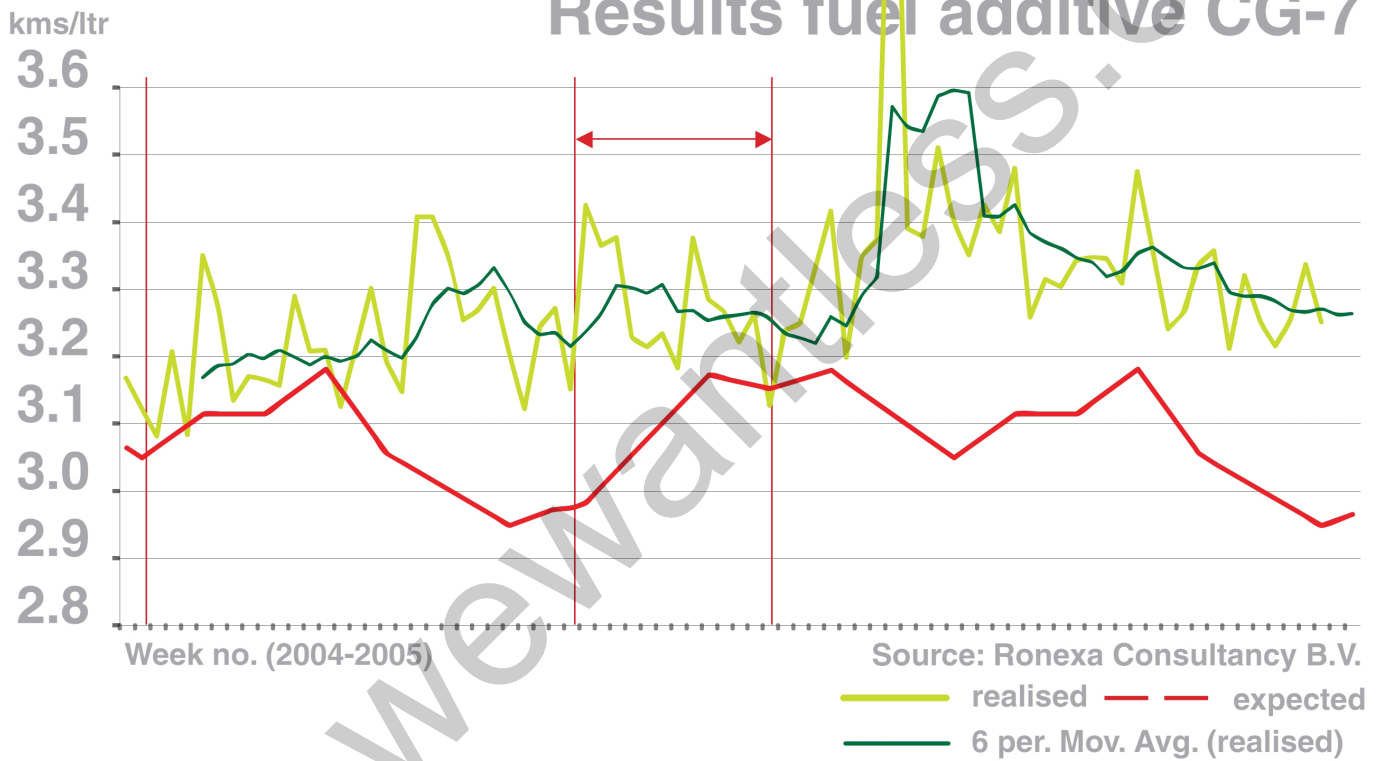
# RESULTS 15 PILOT TRUCKS WITH CG-7



# Results fuel additive CG-7



# Results fuel additive CG-7



# St van den Brink - Effect CG 7

black smoke emission

0.7  
0.6  
0.5  
0.4  
0.3  
0.2  
0.1  
0

without CG-7

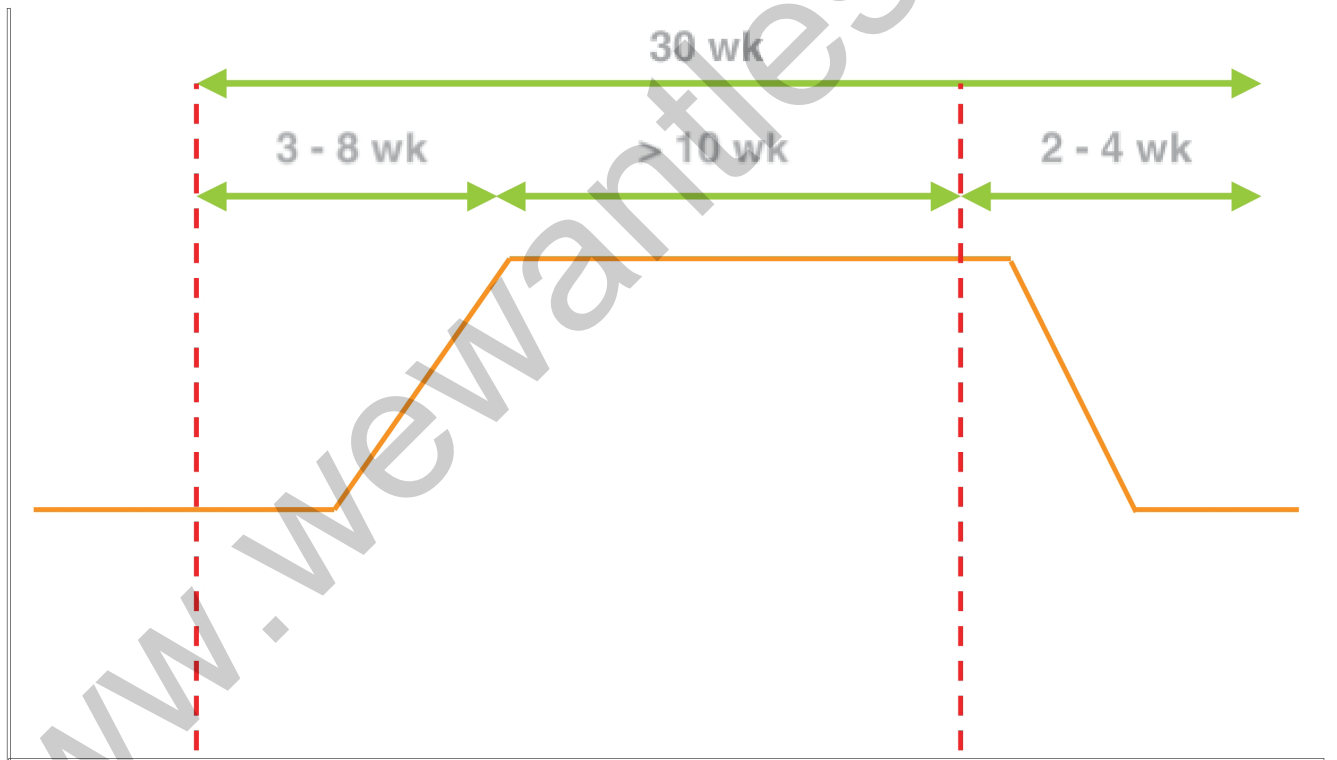
with CG-7





kms/ltr

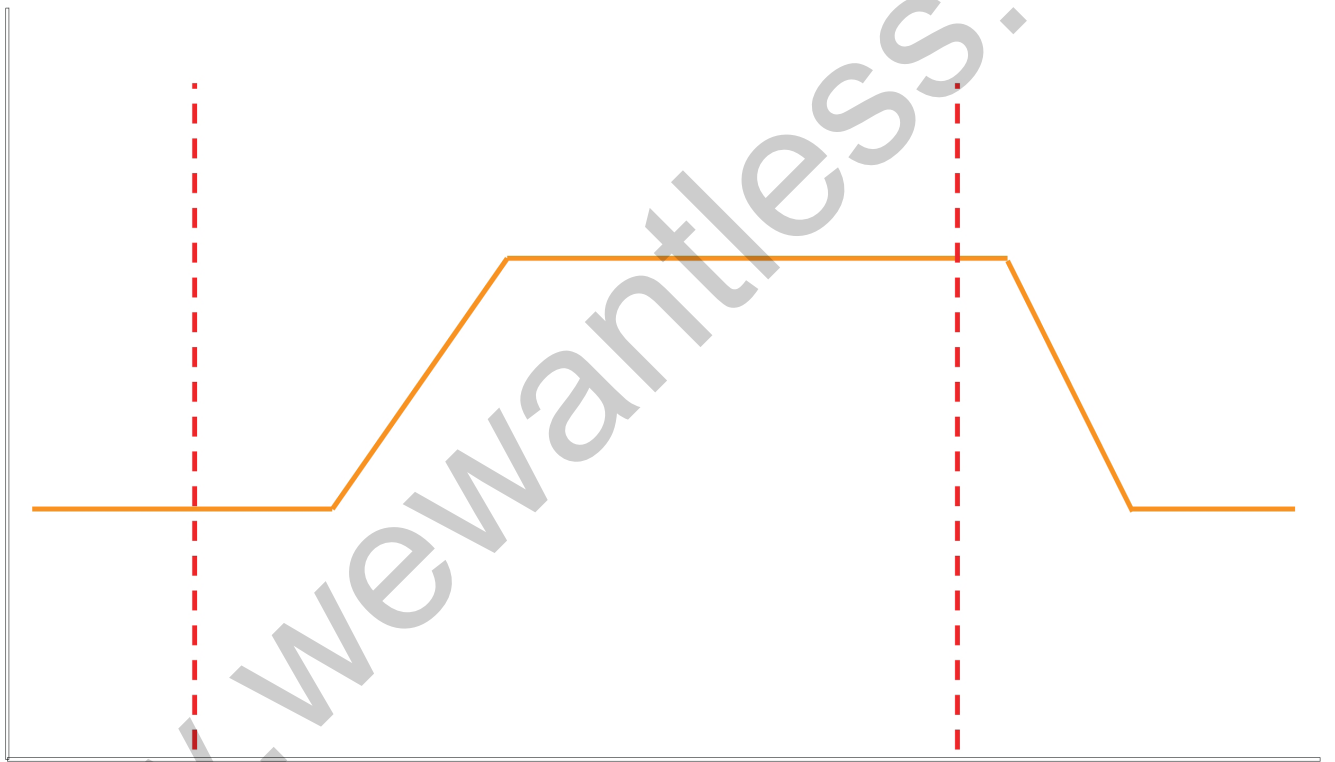
# Basic Test



Time

Source: Ronexa Consultancy B.V.

kms/ltr



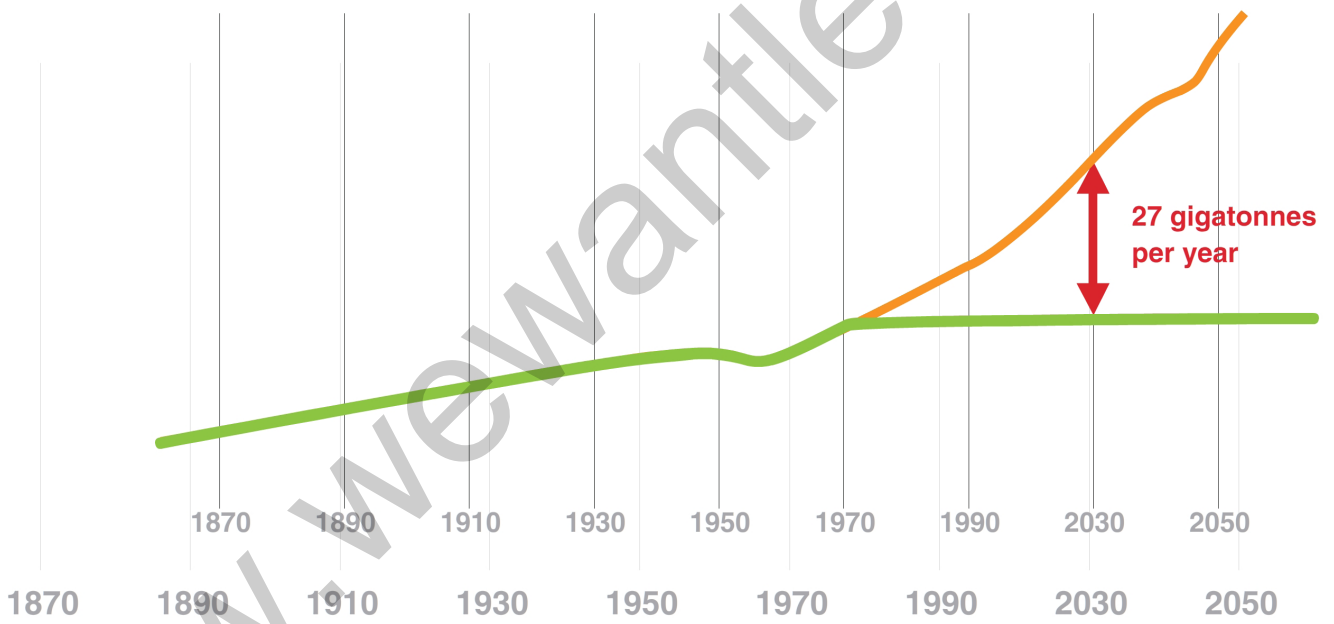
Basic Test

Time

Source: Ronexa Consultancy B.V.

www.wewantless.com

**CO<sub>2</sub> emissions will have to be reduced by 27 gigatonnes per year**





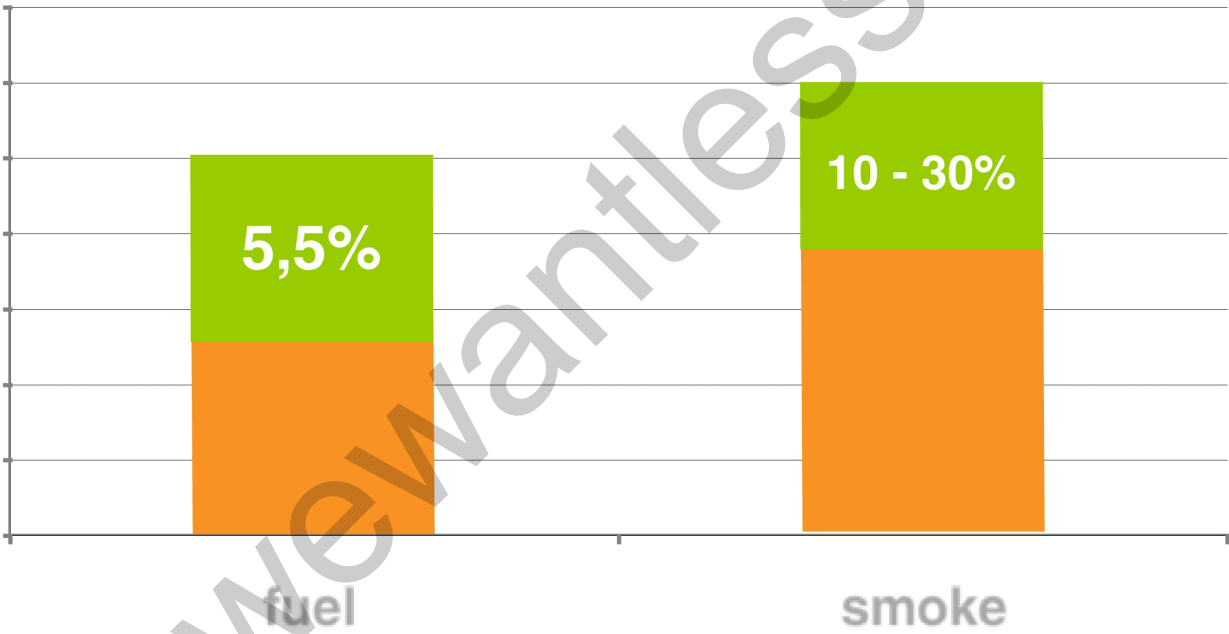
- Higher number of vehicles ( > 20 )
- Differentiate to purpose



- Limited number of vehicles ( > 10 )

Source: Ronexa Consultancy B.V.

St van den Brink



www.newwantless.com